

BATUMI SHOTA RUSTAVELI STATE UNIVERSITY

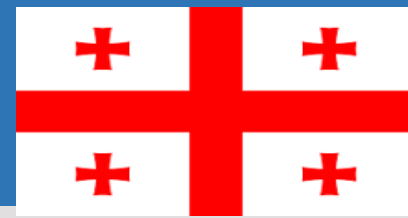


WHERE ARE WE ?

Georgia – SAKARTVELO is located at the intersection of Eastern Europe and Western Asia.
It is a part of the Caucasus region



GEORGIA

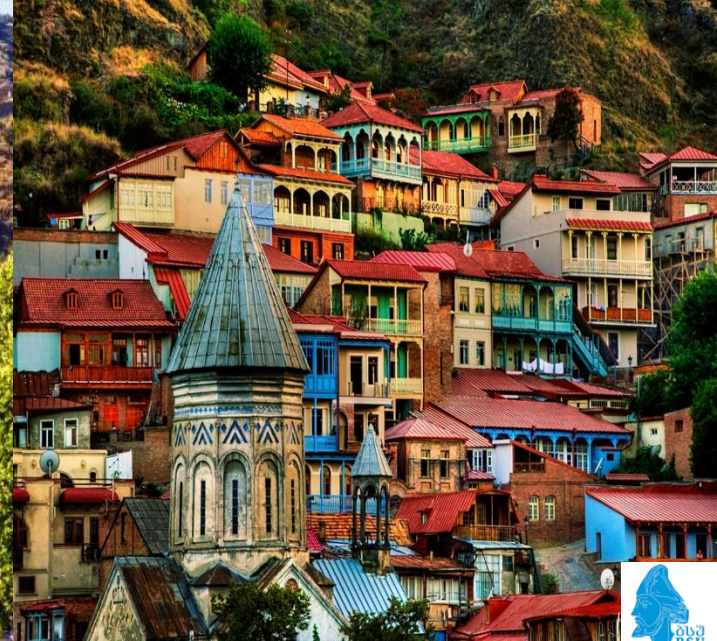


CAPITAL: TBILISI

Officially founded in the 5th century AD

**POPULATION OF GEORGIA:
3 730 000**

AREA: 69, 7 KM2



GEORGIA HISTORY AND HERITAGE



GEORGIA - HISTORY AND HERITAGE





CAPITAL CITY of Adjara: BATUMI

*officially granted the city
status in 1888*

- ❖ Best tourist destination (2012)
- ❖ Tourism Oscar 2022-
World Travel Award
- ❖ City of Sport – 2019
(ACES EUROPE)
- ❖ Variety of types of
tourism for all four
seasons and diversity
of nature





Sergo Edisherashvili



One of the longest seaside boulevards
in the world - Batumi Boulevard –
Cultural heritage monument



BATUMI BOULEVARD



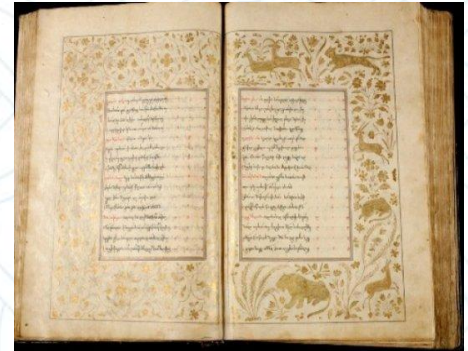
Places to visit



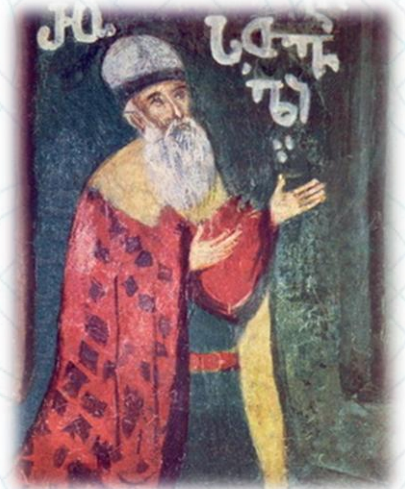


BATUMI SHOTA RUSTAVELI STATE UNIVERSITY

DEPARTMENT OF STRATEGIC DEVELOPMENT
AND INTERNATIONAL RELATIONS



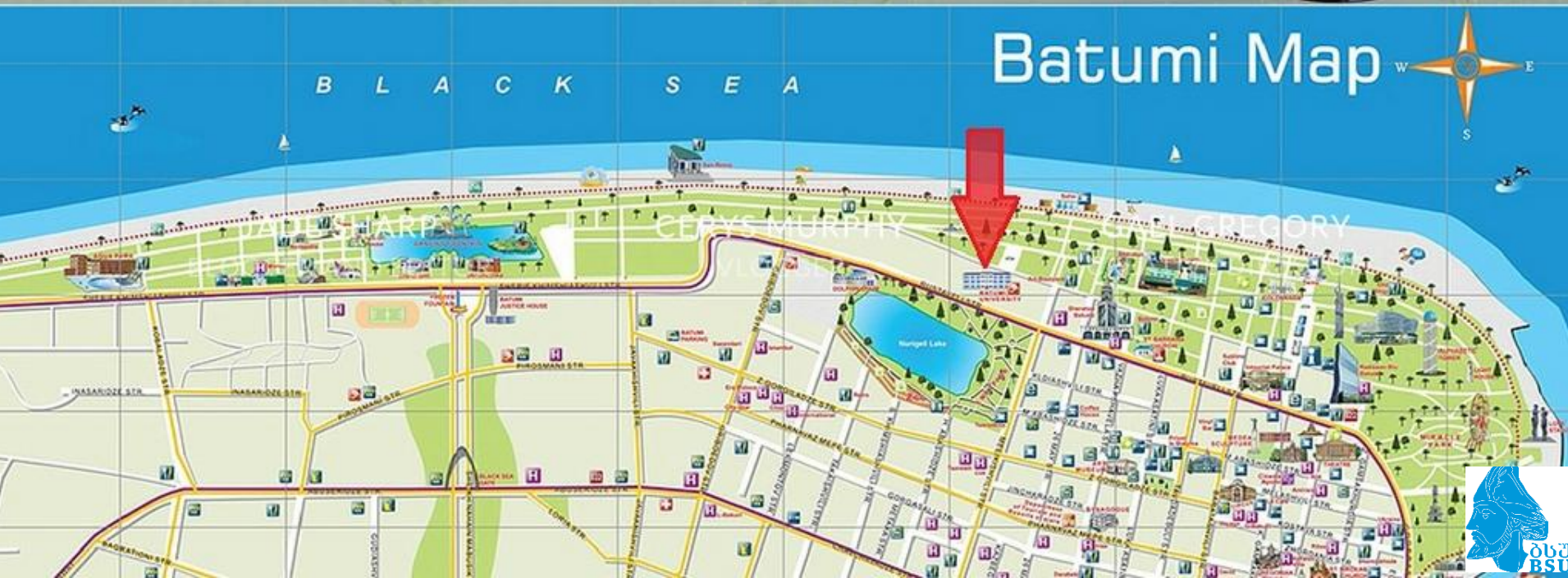
*Shota Rustaveli -
Georgian poet of
XII Century. Author
of the masterpiece
“The Knight in the
Panther’s Skin”
UNESCO announced
the year 2016 the
Rustaveli Year*



Fresco of Shota Rustaveli, Cross
Monastery , Jerusalem

BATUMI SHOTA RUSTAVELI STATE UNIVERSITY MORE THAN 80 YEARS HISTORY

- THE SINCE 1903 MEN'S GYMNASIUM
- FROM 1935 - TEACHER'S INSTITUTE/PEDAGOGICAL INSTITUTE
- SINCE 1990 - UNIVERSITY



BSU CAMPUS

Main Building-Administration/
Faculty of Humanities



BSU Faculties



Vocational Program
Management and Lifelong
Learning Center/Tech Park



Faculty of
technology



Dormitory



Research Institute of
Phytopathology
and
Biodiversity



Research Institute Of
Kartvelian Studies



Dental Clinic



Research Institute of Agrarian and
Membrane Technologies



The Higher education system in Georgia

- Since 2005, the quality assurance system of higher education has been implemented in the higher education system of Georgia.
- Higher education programs are described by the European Credit Transfer and Accumulation System (ECTS).
- The higher education system in Georgia consists of three levels:
- Bachelor's (4-years study consists of at least 240 credits; 180 - mandatory; 60 – optional). Some programs became 3-years.
- Master's (2-years study consists 120 credits)
- Doctoral levels(3-years study)
- Carries out one-cycle educational programs in Medicine/Dentistry (6 years/5 years study)
- Teacher preparation integrated bachelor's and master's program
- For more information you can visit: [www: https://eqe.ge/en](https://eqe.ge/en)

National Center For Educational Quality Enhancement

➤



BSU offers

- ❖ 35 Bachelor Educational Programs
- ❖ 28 Master Educational Programs
- ❖ 8 Doctoral Programs
- ❖ 3 one-cycle educational programs in Medicine
- ❖ About 1200 academic, administrative, invited and research staff
- ❖ About 9400 students
- ❖ Vocational programs

7 Faculties

- ❖ Economics and Business
- ❖ Exact Sciences and Education;
- ❖ Humanities;
- ❖ Law and Social Sciences;
- ❖ Natural Sciences and Health Care;
- ❖ Technologies;
- ❖ Tourism





The Faculty of Law and Social Sciences, BSU (Georgia) Mykolas Romeris University, MRU (Lithuania)

EUROPEAN AND INTERNATIONAL BUSINESS LAW

DOUBLE MASTER PROGRAM



Mykolas Romeris
universitetas

COMPETITIVE KNOWLEDGE ADDRESSING MARKET NEEDS

Joint programme offered by Batumi Shota Rustaveli State University (BSU) and
Mykolas Romeris University (MRU)



WHY STUDY IN THIS PROGRAMME?



International
studies



Two diplomas



Internship



Teaching by renowned
experts in the field



Improve English
Language Skill

❖ Double Master Degree Programs in International Law and European and International Business Law

Students have the opportunity to study one year at BSU and one
year at MRU

These programs are accredited.

Both Georgian and foreign students can study in the program.

Admission requirements: General Master's degree Examination,

English language exam B2 level,

Exam in the field of Law (in English).

Foreign citizens will be enrolled under the legislation of Georgia.

Contact Information:

E-mail: law@bsu.edu.ge





Study Rooms, Laboratories, Centers, Clubs...

Bachelor:

1. Law
2. Public Administration
3. European Studies
4. International Relations
5. Psychology



Master:

1. Law
2. Clinical Psychology

Psychological Clinic



1. Psychological Clinic
2. Imitation Hall
3. Criminology Laboratory
4. Social Studies Centre
5. European Studies Centre
6. Centre for the Study of Public Administration Issues
7. Jean Monnet Chair (3)
8. Jean Monnet Module

European Studies Center

Jean-Monnet Chair - EUCONST



Criminology Study Room-Laboratory



Faculty of Natural Sciences and Health Care

- ❖ one-cycle educational program in Medicine fully instructed in English
- ❖ 6 years study

❖ 800 international students from India, Ukraine, Turkey, Israel

Courses in English
Internships



Faculty of Natural Sciences and Health Care



Bachelor:

1. Biology
2. Chemistry
3. Ecology
4. Geography
5. Pharmacy
6. Physical Medicine and Medical Rehabilitation

One-Cycle:

1. Dentistry
2. Medicine
3. Medical doctor

Master:

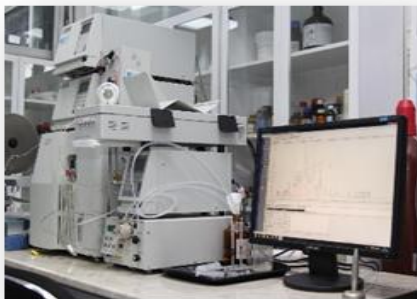
1. Biology
2. Chemistry
3. Ecology
4. Physical Geography and Sustainable Development

PhD:

1. Analysis of Natural Compounds
2. Biology



E-mail: nh@bsu.edu.ge



Faculty of Natural Sciences and Health Care

Study Spaces

Medical Education Center



Lab of Pharmacology



Immunogenetics Laboratory



Dental Clinic



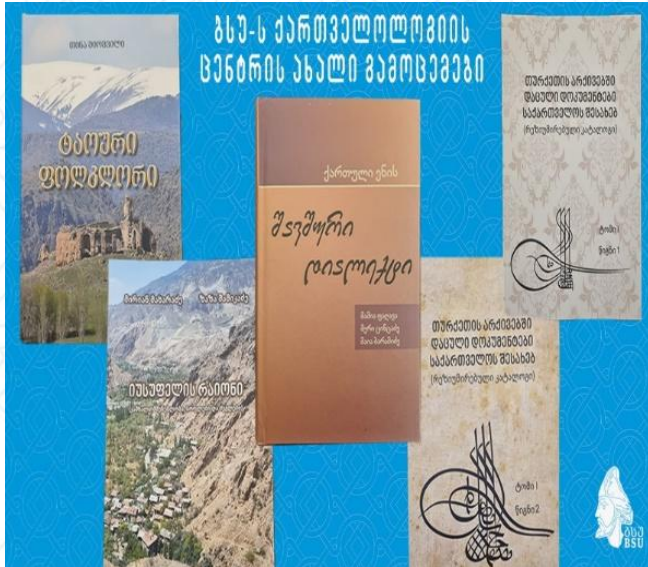
Lab Healthy and Safety Training Center



Lab of Cell Biology



E-mail: nh@bsu.edu.ge



Faculty of Humanities

1. Centre for Kartvelian Studies
2. Centre for Translation and Interdisciplinary Research
3. Centre of Digital Humanities
4. Research Centre for the Exchange of Science and Academy Culture in the Black Sea Region
5. Multimedia Centre
6. Centre for Study of World History Issues
7. Research Laboratory of New and Recent History Sources and Historiography of Georgia
8. Archaeological Institute for South-Eastern Black Sea Studies



Bachelor:

1. Archaeology
2. English Philology
3. Georgian Philology
4. German Philology
5. History
6. Journalism
7. Philosophy
8. Romance Philology
9. Slavic Philology
10. Turkology

PhD:

1. Archaeology
2. History
3. Philology

Master:

1. Classical Archaeology of the Black Sea and the Caucasus
2. Digital Media and Innovation
3. Georgian Literature and Comparative Literary Studies
4. History
5. Linguistics
6. Philosophy
7. Translation Studies and Intercultural Communication
8. Turkology

Courses in English Internships

Contact Information:





Faculty of Economics and Business

Educational Programs:

Bachelor:
1. Business
Administration
2. Economics

Master:
1. Business
Administration
2. Economics
3. Finance and
Banking

PhD:
Business
Administration



bsu.edu.ge

Contact Information: E-mail: natia.tsiklashvili@bsu.edu.ge

Courses in English

Internships



Faculty of Exact Sciences and Education



Contact Information: E-mail: ese@bsu.edu.ge

Educational Programs:

Bachelor:
1. Computer Science
2. Mathematics
3. Physics
4. Primary Education

Master:
1. Mathematics
2. Physics
3. Computer Science
4. Education Administration
5. Vocational and Continuing Education

PhD:
1. Education Sciences
2. Physics

Primary Education Teacher Preparation Integrated Bachelor-Master Program

Internships

1. Teacher preparation Education Program (60 ECTS)
2. Special Education Teacher Training Program (60 ECTS)





Faculty of Technologies

Bachelor:

1. Civil Engineering
2. Architecture
3. Electronics, Telecommunication and Internet Engineering
4. Oil and Gas Engineering
5. Agrarian Technologies
6. Food Technology

Master:

1. Civil and Industrial Engineering
2. Technique and Technologies of Oil and Gas Extraction,
3. Transportation and Storage

CENTERS:

Fab Lab

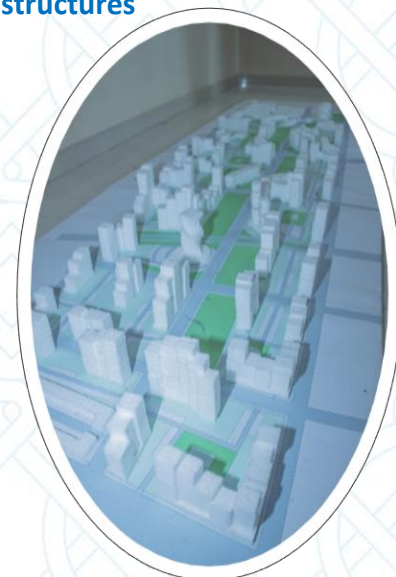
Laboratory of Building Materials and Construction structures

In Vitro Laboratory

Extension Centre

Greenhouse

Technopark



Contact Information: E-mail: sainjinro@bsu.edu.ge



Faculty of Tourism

Educational Programs:

Bachelor:
Tourism

Master:
Tourism and
Hospitality
Management

1. Hotel Management System-OPERA
2. Restaurant Management System-MICROS
3. Restaurant Demonstration Room
4. Training Centre for Development of Sustainable Tourism in Rural Areas
5. Geoinformation and Tourism Technologies Centre
6. 16 English-language courses integrated into the program course
7. Practice in German tourism industry organizations
8. Training/Internship-International Exhibition of Tourism and Hotel Equipment-"EBIT"
9. Field training practice for students
10. A Francophone Employment Center (CEF) under the auspices of the University
11. Agency of Francophonie (AUF)

Contact Information: E-mail: tourism@bsu.edu.ge

Internships

Courses in English

Research Institutes

INSTITUTE OF AGRARIAN AND MEMBRANE TECHNOLOGIES

- ❖ Department of Agricultural Raw Materials Production and Processing Technology
- ❖ Department of Sorption Processes and Electric Membrane Technology
- ❖ Department of Baro-membranes Synthesis and Technology
- ❖ Department of Biochemistry, Analytical Chemistry and Food Product Safety



INSTITUTE OF PHYTOPATHOLOGY AND BIODIVERSITY

- ❖ Department of Biodiversity Monitoring and Conservation
- ❖ Department of Plant Diseases Monitoring, Diagnostics and Molecular Biology
- ❖ Department of Genetics of Resistance
- ❖ Department of Conservation Colchis Peatbogs Habitat and Water Ecosystems



NIKO BERDZENISHVILI INSTITUTE - Georgian Language

- ❖ Department of Ethnology and Social Research
- ❖ Department of History and Archaeology
- ❖ Department of Folklore, Dialectology and Emigrant Literature Research





SCIENTIFIC INTERNATIONAL PARTNERS FOR BSU



- ❖ Horizon Europe
- ❖ Shota Rustaveli Scientific Foundation of Georgia
- ❖ Georgia's Innovation and Technology Agency
- ❖ Horizon 2020
- ❖ Science and Technology Center in Ukraine (STCU)
- ❖ International Science and Technology Center (ISTC)
- ❖ Scientific and Technological Research Council of Turkey (TÜBİTAK)
- ❖ Georgian Research DAAD – Deutscher Akademischer Austauschdienst

- ❖ INTERNATIONAL UNION OF ECONOMISTS (IUE)
- ❖ Eurasia Foundation
- ❖ HEINRICH-BÖLL-STIFTUNG
- ❖ Konrad-Adenauer-Stiftung
- ❖ Technical Assistance to the Commonwealth of Independent States
- ❖ The Institut des Hautes Études Scientifiques (IHES)
- ❖ The Royal Swedish Academy of Sciences
- ❖ The Henry M. Jackson Foundation
- ❖ International Research & Exchanges Board



E-mail: science@bsu.edu.ge

Research Service

Address: 35/32 Ninoshvili/Rustaveli Str. 6010 Batumi, Georgia





THE BIGGEST EU RESEARCH AND INNOVATION PROGRAMME

2 PROJECTS

International Cooperation

- ❖ ARMENIA
- ❖ AUSTRIA
- ❖ AZERBAIJAN
- ❖ CANADA
- ❖ SLOVENIA

- ❖ BULGARIA
- ❖ KAZAKHSTAN
- ❖ KIRGIZSTAN
- ❖ LATVIA
- ❖ LITHUANIA

- ❖ BOSNIA AND HERZEGOVINA
- ❖ CYPRUS
- ❖ CZECH REPUBLIC
- ❖ ESTONIA
- ❖ FRANCE
- ❖ LIECHTENSTEIN



- ❖ PORTUGAL
- ❖ SPAIN
- ❖ TURKEY
- ❖ UKRAINE
- ❖ UNITED KINGDOM
- ❖ USA

- ❖ NETHERLANDS
- ❖ NORWAY
- ❖ POLAND
- ❖ ROMANIA
- ❖ SLOVAKIA

- ❖ GERMANY
- ❖ GREECE
- ❖ HUNGARY
- ❖ IRAN
- ❖ ITALY
- ❖ ISRAEL

E-mail: ird@bsu.edu.ge

Department of Strategic Development and International Relations
Address: Room 35, 35/32 Ninoshvili/Rustaveli Str. 6010 Batumi, Georgia





ERASMUS +

CREDIT MOBILITY
About 100 AGREEMENTS

CAPACITY BUILDING
28 GRANTS

JEAN MONNET
4 PROGRAMME

**ERASMUS+ “Youth Entrepreneurship in
the Eastern Partnership Countries: the
Experience of Formation and Prospects for
Development”**

**Erasmus Mundus Master Join
Degree project on Soil
Science and Plant Nutrition
BSU as an Assoc. partner**

E-mail: Erasmus@bsu.edu.ge
Department of Strategic Development and International Relations
Address: Room 35, 35/32 Ninoshvili/Rustaveli Str. 6010 Batumi, Georgia

**Key Action 3 –
Structured Dialogue in
the youth field**

Virtual Exchange Programs

➤ MOVEx -2022

Development of the Model and Common Information Space of Virtual Exchange Programs

Coordinator: Wroclaw University of Science and Technology

➤ ArtNoConflict– 2023

The Art of Negotiation and Conflict Resolution

Coordinator: Netherlands Business Academy

➤ Virtual Voyages– 2024

Project Title: Acquiring Transversal Competences through Virtual Voyages

Coordinator: UNIVERSITATEA AUREL VLAICU DIN ARAD

Department of Strategic Development and International Relations

IV "Erasmus+" International Week



MINISTRY OF
EDUCATION, CULTURE AND
SPORT OF AJARA
AUTONOMOUS REPUBLIC



საქართველოს ავტონომიური
აქციონის, კულტურის და სპორტის
მინისტრის
MINISTRY OF EDUCATION, CULTURE AND SPORT
OF AJARA AUTONOMOUS REPUBLIC



Event "My European University"

II "Erasmus+" International Week



Presentation of Erasmus+ Exchange Programs



Department of Strategic Development and International Relations



Erasmus+ Activities

INTERNATIONAL STUDENTS





ERASMUS+

OUTGOING





Erasmus + ICM Procedures at BSU

Special Registration Platform

Search



Erasmus+



ბათუმის შოთა რუსთაველის სახელმწიფო უნივერსიტეტი

სტუდენტთა რეგისტრაცია





Erasmus + ICM Selection Procedures at BSU

Before the mobility

- Testing applicants in Required Language (B1-B2)
- Checking Applications
- Interviewing
- Sending pre-selected students list to partner Universities for nomination
- Supporting to nominated students for preparing Learning Agreement (with Faculty Quality Assurance Services of BSU) and visa procedures



Erasmus + ICM Selection Procedures at BSU

After the mobility

- Providing students summary of the recognition of ECTS credits by their home faculties
- Applying at the EQE of Georgia for recognition
- Recognizing and integrating of ECTS credits accumulated at host institution of exchange students



INTERNSHIP OFFERS

- **TOURISM INDUSTRY : IN HIGH CLASS 5 STAR HOTELS; TOURISM AGANCIES**
- **BIODIVERSITY : BOTANICAL GARDEN; MTIRALA NATIONAL PARK**
- **ARCHEOLOGY : GONIO-APSAROS CASTLE**
- **ENGINEERING : IN HIGH CLASS CONSTRUCTIONS**
- **PSYCHOLOGY : UNIVERSITY PSYCHOLOGICAL CLINIC**

STUDENT LIFE AT BSU

Women folk music ensemble "Tirini"
BSU Jazz Big Band
BSU Band "OFF SIDE"
Student Theatre "Dasi"
Choreographic Ensemble "Tbeti"
Students' Basketball Team
Volleyball Team
Football Team
Students Rugby Team



THANK YOU FOR YOUR
ATTENTION



Scan me